



Musical Theatre Audition REQUIREMENTS



An audition and interview are required for admission to the Musical Theatre Major in the School of Theatre and Dance. In the 2023-2024 Admissions Cycle we will offer in-person, virtual and video options. Students should apply to both JMU and the School of Theatre and Dance separately and register for an audition/interview.

What to Do?

1. Apply to JMU

2. Register for a Musical Theatre Audition

3. Apply to School of Theatre and Dance on Slideroom

SLIDEROOM

Musical Theatre Major applications to the School of Theatre and Dance are submitted through [Slideroom](#). Applicants who wish to be considered for BOTH Theatre and Musical Theatre only need to submit one Slideroom application (but schedule separate auditions, and follow the submission guidelines for both Theatre and Musical Theatre). Slideroom applications should be submitted 9-days before your audition/interview along with the following materials:

- **Photo of yourself**
- **Resume:** including any relevant artistic experience.
- **Unofficial Transcript:** from high school or, in the case of transfer students, BOTH college and high school.
- **Personal Statement:** Please describe a creative experience you've had that was particularly meaningful, engaging, or transformative. You might, for example, discuss a production you worked on, a play you wrote, a performance you saw, or a creative experience not specifically connected to theatre or musical theatre. Help us to understand through your writing who you are, your life experience, and how it may relate to your interest in Musical Theatre and/or Theatre. Please limit your response to 1000 words or less.
- **Supplementary Materials:** Please upload the requested supplementary videos to Slideroom. **This is not a prescreen**, and does not need to be the same material you will present at a live/virtual audition. We use these videos as a supplement to your live/virtual audition for those attending in-person and virtual auditions. These are used as the audition for those requesting a video audition without a virtual or in-person component.

Please submit your [Slideroom application](#) at least 9-days prior to your audition.





AUDITION REQUIREMENTS

We aim to host inclusive and accessible auditions that allow all participants to engage and share fully. To request accommodations please contact arecchk@jmu.edu.

Please prepare the following for your audition for the Musical Theatre major at James Madison University:

SONGS

Students should prepare two contrasting songs, each 60-90 seconds in length.

- One song should be a ballad and one song should be an uptempo.
- Choose one of the following options:
 - Option A:**
 - One song written prior to 1970. This song can be either uptempo or ballad. (*students choice*)
 - One song written after 1970 and contrast the style of the first.
 - Option B:**
 - Both songs written after 1970 and contrasting in style (*ballad and uptempo*)
- For on-campus auditions an accompanist is provided. Please bring sheet music in the key that you intend to sing.
- For off-campus auditions, please bring your recorded accompaniment and a speaker.
- When filming your videos you may use live or recorded accompaniment.
- Please do not sing a cappella. All singing should be accompanied by music.

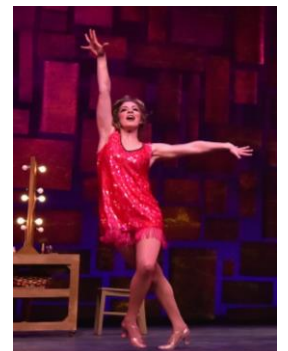
MONOLOGUES

Students should prepare one contemporary (written after 1950) monologue 60-90 seconds in length.

- Monologues should be from a published play.
- Monologues should not be from musicals, television shows, or movies.

DANCE

- At in-person auditions students will participate in a short jazz dance combination which will be taught on the day of the audition.
- For virtual and video auditions the dance media that you upload to Slideroom will be used for the dance component.



While James Madison University **does not require a prescreen** we follow the [Musical Theatre Common Prescreen Criteria](#) for the submission of the required videos in Slideroom. **Please remember that ALL auditionees (in-person, virtual, or video) are asked to upload videos of two songs, one monologue, and dance as part of the Slideroom application.**

OVERALL

Each piece should be filmed/uploaded as a separate piece of media. No continuous videos. Students are encouraged to use standard technology/recording devices that are available to them (i.e. smartphones, tablets, etc).

INTRODUCTION ("SLATE")

There should not be a separate introduction or "slate" video. Instead, slates are to appear at the beginning of each piece and included as part of the time allotment. *(Read through the resources page on the [Musical Theatre Common Prescreen](#) site for examples of each of the three slates described).* The proper slate for a song is to share **your name**, the **song title**, and **show** in which it appears. The proper slate for a monologue is to share **your name**, the **title of the play**, and the **playwright**. The proper slate for a piece of dance is to share **your name**, the **title of the song** you are dancing to, and the **name of the choreographer**. If the piece is "self-choreographed" you should share your own name as choreographer.

SONGS

- Style: one song should be a ballad (where the piece has longer, sustained vocal lines) and one song should be an uptempo (where the vocal line moves at a conversational pace) so as to contrast style
- Length: Each song file should be 60-90 seconds *(this time limit includes the slate at the beginning of the piece and is strictly adhered to; please do not upload media files longer than 90 seconds).*
- Students must sing to musical accompaniment, which could include live or pre-recorded accompaniment. No "a cappella" singing *(meaning singing without music)*.
- One of the two songs *(student's choice)* should be filmed in a full frame shot to see your full range of expression, and the other one in a close-up shot (top of the head to the chest should be visible in the frame).

MONOLOGUE

- Your monologue file should be 60-90 seconds in length *(this time limit includes the slate at the beginning of the piece and is strictly adhered to; please do not upload media files longer than 90 seconds)*
- The monologue should be filmed in a "close-up" shot which means the top of the head to the chest should be visible in the frame.

DANCE

- Please submit 30-60 seconds of dance in whatever dance discipline you feel most confident. This may include, but is not limited to jazz, ballet, tap, modern, hip hop, lyrical, contemporary, or dance styles beyond American and Euro-western styles. You may also choose to learn, film, and upload the [JMU provided dance combination](#) available *(see link below)*
- All dance media should be filmed in a "full frame" shot taking care to keep the student's entire body in the frame at all times.
- Style: Regardless of which style of dance you execute, the choreography and the movement should be connected to the music where the applicant is dancing with a sense of purpose.
- Please use steps, movement, and physical vocabulary that you are familiar with and can execute well. To the best of your ability, move your body fully. Please include at least one turn, one jump and one kick (or other suitable rotation, elevation, and extension that works for your body)
- Dance media can be self-choreographed, but must be a solo video of you. This can include a show, competition, or other performance so long as you are clearly featured on your own.
- All choreography must be performed to music; no "a cappella" dance media please.

WILD CARD *(optional)*

- Submissions should be no more than 60 seconds.
- Applicants **do not** need to slate in any wild card media.
- This media can be ANYTHING you want: a special skill, an interesting story about yourself, a passion speech, an instrument that you play, etc. "What do you want us to know about you?" and "What makes you unique?" *(See the resources page on the [Musical Theatre Common Prescreen](#) site for ideas on Wild Card submissions).*

(The [JMU provided dance combination](#) can be accessed at: <https://youtu.be/AualXBwfsWM>)

AUDITION PREPARATION

- **Choose material that will show off a range of what you do well right now.** Avoid songs and monologues that are outside of the scope of your current level of proficiency or experience.
- **Remember that the material you choose is a reflection of you.** Choose material that you LOVE. Your material is one of the ways we can learn something about you, your interests, and your taste.
- **With both the song and the monologue, we are looking to see how you work with your imaginary scene partner.** We suggest that you rehearse your song as a monologue to get at the core of the text. Avoid dance choreography or rigid blocking in your pieces. We are looking for grounded, truthful work.
- **Keep the monologue short and to the point.** 60-90 seconds may not seem like a long time, but you would be surprised how much you can communicate. Quality, not quantity is the key. **Please time your material.** If you find a monologue in a monologue book, make-sure to still read the entire play and know the context. **All material must be memorized.**
- **When cutting music it generally works best if you begin at the end of the song and count backwards.** 16-bars of a ballad or 32-bars of an uptempo will each take approximately 60 seconds. Please keeps each song selection in the 60-90 second timeframe.

Be yourself and have fun. Remember that we want you to do your best!



Questions?

Contact Kate Arcchi, Musical Theatre Coordinator at arcchkm@jmu.edu

Twelfth Night production photos by Hunter Carrico

Chicago, Guys and Dolls, Once, Rent, Side Show, Sweet Charity, and Wild Party production photos by Richard Finkelstein